

Who may live, O Lord, in your dwelling place?

Psalm 15

Words and music: David Lee

RESPONSE

Who may live, O Lord, in your dwell-ing place? Who may stand for-giv-en be-

E E/D# E/C# E/B AMaj7 E/G#

fore your face? Those whose lives ac - cord with your

Bsus4 B G#/B# C#m

rule of grace: they shall see the king - dom of God.

F#m7 B Esus4 E

VERSES

1. If you lead a pure, blame-less life; if you do those deeds which are
 2. If to oth - ers you do no wrong; if you have no spite on your
 3. If you will be true to your word; if you speak for those nev - er

A9 D A9

right; if you speak the truth with in - teg - ri - ty;
 tongue; if you stand op - posed to the fraud - u - lent;
 heard; God will grant the long - ings with - in your heart,

D F# Bm Bm/A

if you put a - way all dup - li - ci - ty.
 if you stand for all those who fear the Lord.
 fill your life with prais - es in ev' - ry part.

G#7 C#m Bsus4 B7

For normal use, the response and verses up to this point may be sufficient. The optional version of the response which follows may be useful for larger gatherings.

RESPONSE

Descant

Musical staff for Descant in E major, 3/4 time. The melody consists of quarter notes: E4, G#4, A4, B4, A4, G#4, F#4, E4.

Who may live in your dwell - ing place?

Congregation

Musical staff for Congregation in E major, 3/4 time. The melody consists of quarter notes: E4, G#4, A4, B4, A4, G#4, F#4, E4.

Who may live, O Lord, in your dwell - ing place?

Choir ('Ah')

Musical staff for Choir ('Ah') in E major, 3/4 time. The melody consists of quarter notes: E4, G#4, A4, B4, A4, G#4, F#4, E4.

E E/D# E/C# E/B

Piano accompaniment for the first system in E major, 3/4 time. The right hand plays chords and the left hand plays a simple bass line.

Musical staff for Descant in E major, 3/4 time. The melody consists of quarter notes: E4, G#4, A4, B4, A4, G#4, F#4, E4.

Who may stand be - fore your face?

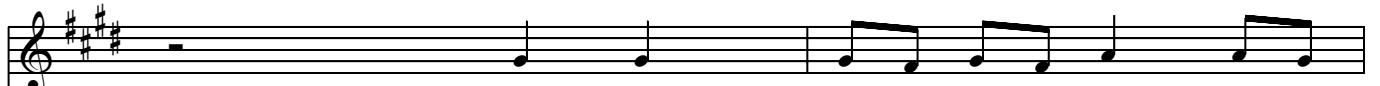
Musical staff for Congregation in E major, 3/4 time. The melody consists of quarter notes: E4, G#4, A4, B4, A4, G#4, F#4, E4.

Who may stand for - giv - en be - fore your face?

Piano accompaniment for the second system in E major, 3/4 time. The right hand plays chords and the left hand plays a simple bass line.

AMaj7 E/G# Bsus4 B

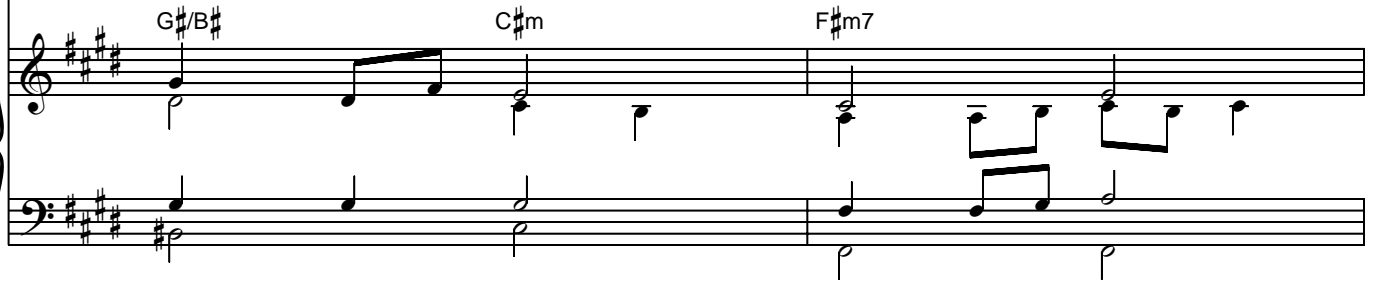
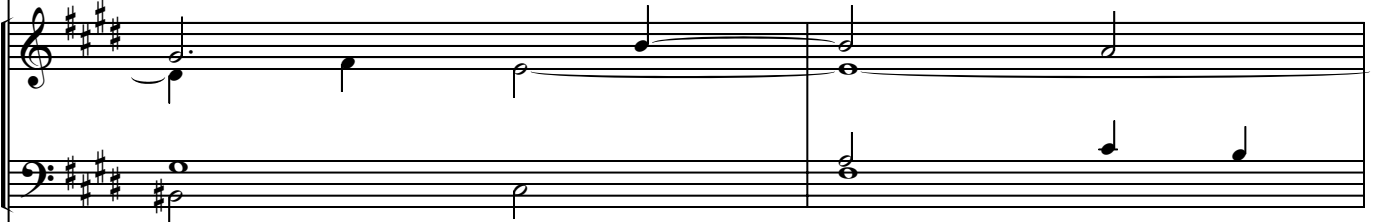
Piano accompaniment for the third system in E major, 3/4 time. The right hand plays chords and the left hand plays a simple bass line.



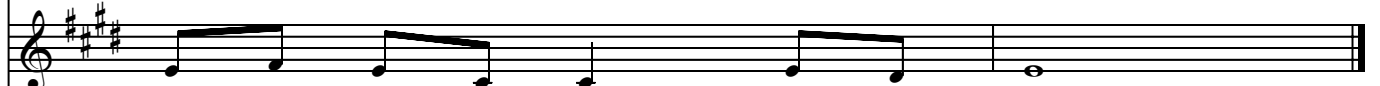
Those whose lives ac - cord with your rule of



Those whose lives ac - cord with your rule of grace:



grace shall see the king - dom of God.



they shall see the king - dom of God.

